

# MESOC final conference

9-10 March 2023 · Paris

**MESOC resources –  
policy briefs**

**Arthur Le Gall**  
KEA, Director



**MESOC**  
measuring  
the social dimension  
of culture



This project has received funding  
from the European Union's Horizon 2020  
research and innovation programme  
under grant agreement No 870935

# POLICY BRIEFS

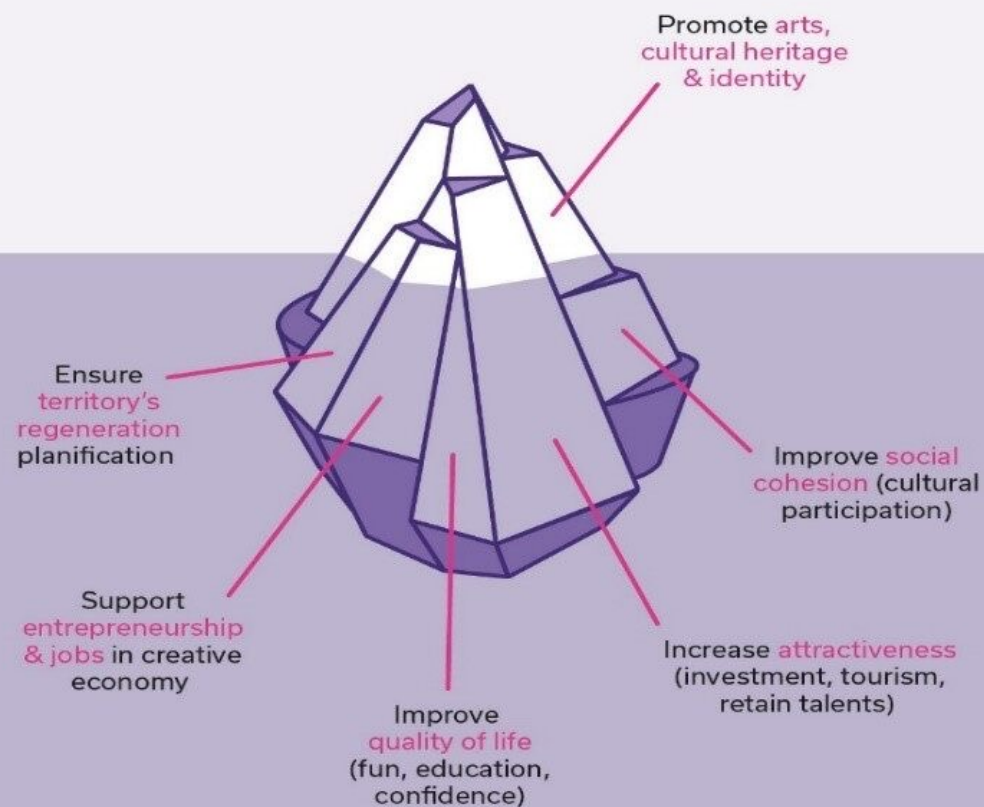


## Aims:

- Articulate the various results achieved by MESOC with their practical implications
- Develop key ideas in terms of potential direct uses (use cases)
- Explore the policy implications of MESOC and develop a first set of recommendations.



# CONTEXT - THE RELEVANCE OF MESOC APPROACH



# CONTEXT – THE RELEVANCE OF MESOC APPROACH



## **Societal value and impacts of the CCS acknowledged:**

- At local level – key policy documents by UNESCO and European Commission on the role of culture for sustainable cities, Eurocities working group on societal impacts
- At EU level: work plan for culture places social impacts as core priority (used as basis to develop MESOC approach), now clearly embedded in New European Bauhaus initiative.
- Council of Europe 2022 recommendation on the role of culture in addressing global challenges.



## Resources

### MESOC Tools

MESOC generates, uses and shares a number of tools during the project duration aimed to enable the creation of knowledge about the social dimension of culture beyond the boundaries of the project. These exploitable assets, which consist of concepts, methods, applications, tools and documents, are free and open.



SICCRD



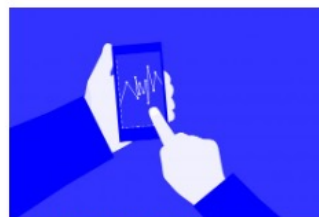
DELPHI CONSULTATION



SEMANTIC SEARCH ENGINE



GENDER AND CULTURAL AND CREATIVE SECTOR: A GUIDE ON GENDER INTEGRATION IN CULTURAL STATISTICS



AU CULTURE PLATFORM



METHODOLOGICAL GUIDELINES



ONLINE REPOSITORY

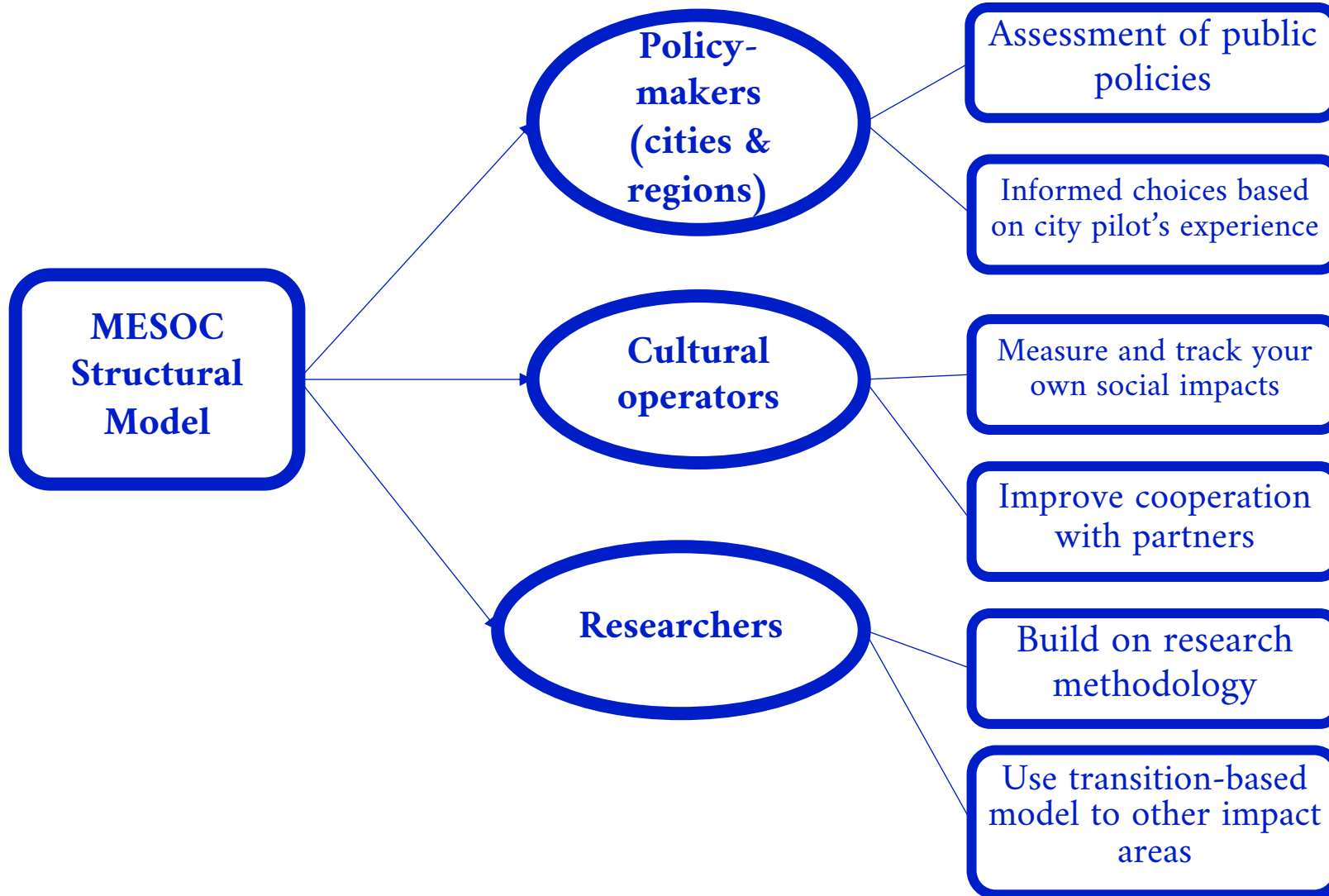


STRUCTURAL MODEL

Main MESOC tools

For whom?

Potential uses



# PRELIMINARY POLICY RECOMMENDATIONS



## **Prioritisation of culture across policy areas:**

- CCS should be placed as a strategic element in public policies and specific plans should be drawn up for their promotion, given their broad social return.
- Clear call for adequate support to cultural projects with social impacts

## **Articulating the micro, meso and macro levels of policy making:**

- Particularities of each region and its own CCS should be taken into account, to strengthen those areas of action in which they have the greatest potential to have an impact.
- Important enabling conditions (skills, mediators, open spaces of cooperation) to nurture the CCS social impacts.

## **On gender equality**

- Establish European-level guidelines to encourage Member States to introduce a gender equality law that includes the adaptation of statistics;
- Require gender-disaggregated data from all mandatory statistics at the European level with particular attention to cultural and creative enterprises and international trade;
- Set up a joint working group of gender and statistics experts to introduce the gender variable into more complex surveys to highlight the role of women in the different aspects of the CCS.



# FURTHER DEPLOYMENT OF THE SOLUTIONS DEVELOPED IN MESOC



## Societal value and impacts of the CCS acknowledged:

- Developing a broader network of local authorities to test the various tools developed in MESOC in order to evaluate the societal impacts of culture
- Prototyping of cultural observatories based on the MESOC's structural model
- MESOC theory of change approach could help in addressing access to finance issues, by making the case for impact investment in the CCS.
- Addressing new societal challenges (e.g. environmental impacts).







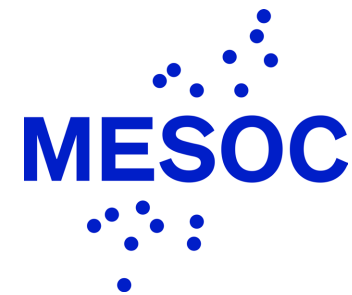
# MESOC

measuring  
the social dimension  
of culture

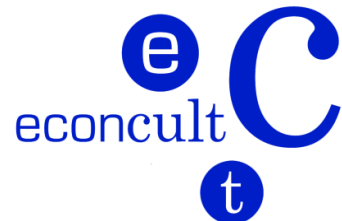


This project has received funding  
from the European Union's Horizon 2020  
research and innovation programme  
under grant agreement No 870935

# PARTNERS



VNIVERSITAT  
ID VALÈNCIA



POLITECNICO  
MILANO 1863

DIPARTIMENTO DI ARCHITETTURA  
E STUDI URBANI  
DEPARTMENT OF ARCHITECTURE  
AND URBAN STUDIES



UNIVERSITAT DE  
BARCELONA

Relais  
Culture  
Europe



WORLDCRUNCH



This project has received funding  
from the European Union's Horizon 2020  
research and innovation programme  
under grant agreement No 870935